



15W (1/50 HP)

BRAKE MOTORS Frame size 70mm sq. (2.76 in. sq.)

Single-Phase

LEAD WIRE TYPE

SPECIFICATIONS

30MIN. DUTY, INSULATION CLASS A or E, 4POLES

Model	Output		Voltage (V)	Frequency (Hz)	Rated						Starting Torque			Magnetic Brake			Capacitor (μ F)
	(HP)	(W)			Input (W)	Current (A)	Torque			Speed (rpm)	Torque			Current (A)			
			(kg-cm)	(N-m)			(oz-in)	(kg-cm)	(N-m)		(oz-in)						
L7R15□CLE	1/50	15	1 \varnothing 100	50	0.46	1.22	0.120	16.94	1200	1	0.098	13.89	2	0.196	27.77	0.07	7
60				0.45	0.95	0.093	13.19	1550	1	0.098	13.89	2	0.196	27.77			
L7R15□DLE	1/50	15	1 \varnothing 200	50	0.23	1.22	0.120	16.94	1200	1.1	0.108	15.28	2	0.196	27.77	0.07	2
60				0.27	0.95	0.093	13.19	1550	1.1	0.108	15.28	2	0.196	27.77			
L7R15□BLE	1/50	15	1 \varnothing 220	60	0.23	0.95	0.093	13.19	1550	1.15	0.113	15.97	2	0.196	27.77	0.07	1.5
L7R15□ELE	1/50	15	1 \varnothing 115	60	0.50	0.95	0.093	13.19	1500	1.15	0.113	15.97	2	0.196	27.77	0.07	6
L7R15□XLE	1/50	15	1 \varnothing 220-240	50	0.24	1.17	0.115	16.25	1250	1.2	0.118	16.66	2	0.196	27.77	0.07	1.8

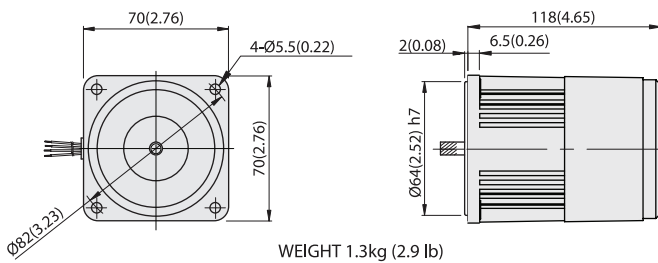
- * Model in grey screen represents the motors with THERMALLY PROTECTED according to UL regulation.
- * Model in dark grey screen represents the motors with THERMALLY PROTECTED according to CE regulation.
- * In case of some models certificated for export, the special cord like CE or UL is added after the existing model no. ex) L9I60 □XH-CE, L9I60 □EH-UL.
- * Insulation class for motors which acquired certificates for export is B.

BRAKE MOTORS

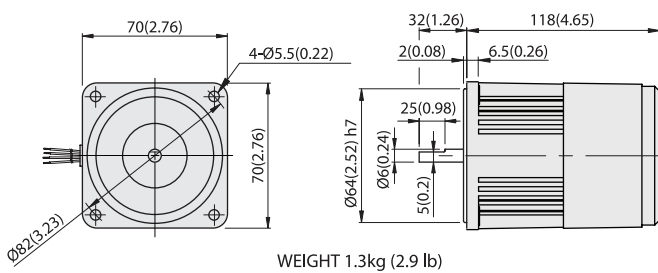
DIMENSIONS

L7R15P□LE

Unit : mm(inch)

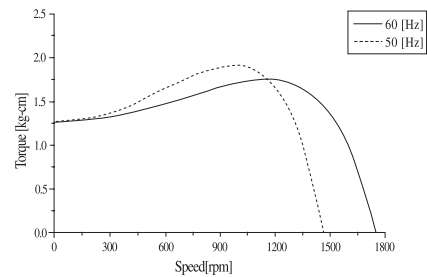


L7R15D□LE



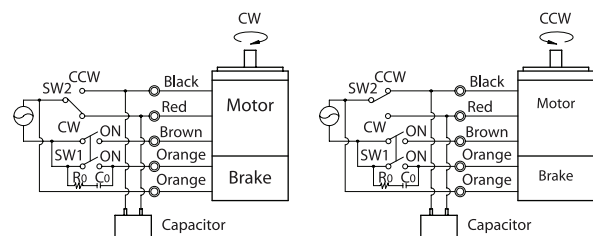
SPEED-TORQUE CURVE

Single phase L7R15□□LE



CONNECTION DIAGRAMS

Standard or with T.P



The direction of rotation is seen from the end of motor shaft.